

lekko.
pureAir Mask

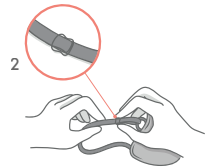
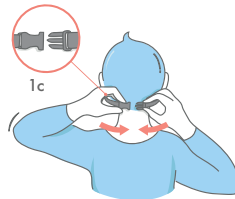
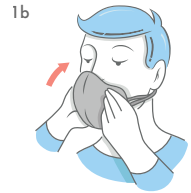


Thank you for your trust.

Look great and protect yourself from air pollution.

1. Using the mask

Before using the mask, check the valves in the filter. To use the mask hold it by the ear loops (1a), place it on your face (1b) and put the ear loops behind your ears. You can reduce the pressure on your ears and ensure the best fit on your head by regulation the head strap (1c). The head strap will also allow you to hang the mask around your neck when you're not using it.



2. Mask adjustment

The ear loops and head strap are both adjustable for your comfort. Set the length of the straps according to your needs for optimal comfort and sealing to your face (2).

Take care of yourself

Every day we take an average of 20,000 breaths, passing about 10,000 litres of air through our lungs to supply the body with life-giving oxygen. When the air is polluted, the lungs open the way for dusts and viruses, allowing them to enter the body. They not only cause infectious diseases, but also lead to asthma, respiratory diseases, cancer, stroke and can even be a direct cause of death.

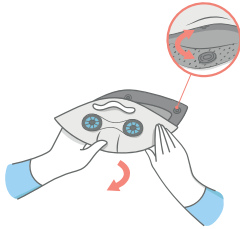
The PureAir is a filtration mask designed to provide comfort and protection in every situation.

Our experience and work on ergonomics with users allowed us to develop a new design optimised for summer conditions. The minimalist form of the mask provides the highest level of breathability, lightness and comfort in the most demanding urban areas. The innovative OptiForm sealing system adapts to individual facial features allowing a comfortable fit to every face. Replaceable high quality certified filters guarantee protection against pollution and airborne threats such as harmful dust particles, allergens, viruses and bacteria.

Breathe in. Easily and safely.

A. Filter replacement

Our mask is equipped with filter replacement system. To replace the filter, hold the material as close as possible to the snap fastener on both sides, and then release the snap. After releasing the snap, remove the old filter from the mask.



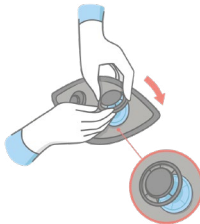
B. Exhalation valves

The filter has reusable parts. Exhaust valves and a plastic insert connecting the valves should be kept to be fitted in a new filter. To do this, pry the outer edge of the valve with a blunt edge (e.g. a ruler) until it's detached.



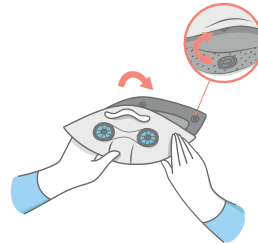
C. Mounting the valves

Put the valve-connecting insert on the bottom part of the detached valve (the part with the membrane), then place it evenly in the filter slot from the inside. Carefully fit the elements evenly so that there are no possible air leaks. Place the cap and check that the filter material doesn't interfere with the membrane inside and snap the cap. Repeat the procedure with the second valve.



D. Mounting the new filter

Place the new filter with the valves in the correct orientation (the black surface towards the mask and the white surface towards the face). Finally, attach all snap fasteners. Make sure that the filter is mounted correctly and enjoy effective filtration.



Lekko pureAir features

Profiling insert

shapes the mask creating a chamber for optimal air circulation and great breathing comfort

Adjustable straps

comfort adjustable for your needs

Exhalation valves

two big exhalation valves allow easy air circulation and quick release of exhaled carbon dioxide and moisture



Replaceable filters

change the filters accordingly to your needs: choose N95 for increased air-flow or N99 for maximum protection

Soft breathable skin

delivers unlimited airflow and helps breathing during activities and summer conditions

Innovative OptiForm® system

adapts to the face and provides sealing and protection



After removing the filter wash the mask by hand, preferably at low temperatures up to 30 C°. The filter cannot be washed.

skin: polyester net
filter: nanofiber membrane with activated carbon
mask: EVA foam